

# eBee X

## Lightweight mapping drone for large coverage and sharp data

NDA-compliant drone for professional mapping operations and advanced missions, such as flying safely over people.



### Easy to transport

3.6 lbs / 1.6 kg  
Max. takeoff weight

### Fly longer






90 min  
Flight time\*

### Map more

1,235 ac / 500 ha  
Max. coverage\*\*

### Absolute accuracy down to

0.6 in / 1.5 cm  
GSD

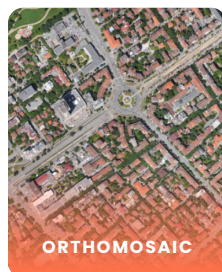
<b>RTK / PPK</b> 	<b>Flight management software</b> 	<b>Certified operator online training</b> 
<b>Backpack</b> 	<b>Endurance extension***</b> 	<b>Endurance batteries</b> 
<b>Smart battery charger</b> 	<b>USB ground modem</b> 	<b>Spare propellers and pitot kit</b> 

**Included with your eBee drone**

\* Up to 90 minutes flight time with endurance battery and S.O.D.A. camera. \*\* Coverage with endurance battery and S.O.D.A. 3D camera. \*\*\* Subject to export regulations

## From images to insights

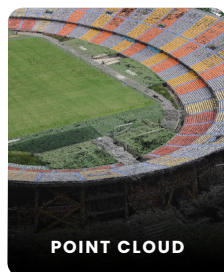
The eBee X allows you to get precise photogrammetric outputs, empowering informed decision-making in surveying, urban mapping, agriculture, construction, public safety, mining, utilities and environmental monitoring.



.tiff



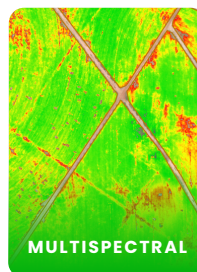
.png



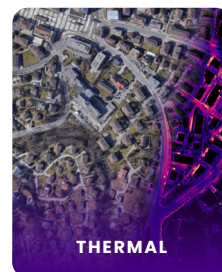
.kml



.shp



.obj



.las

.laz

.ply

.ascii

.dxf

## Modular, portable and easy-to-use

The eBee X's modular and compact design enables easy replacements and convenient field repairs, meaning less downtime for your operations.



## Streamline your operations with eMotion flight planning software

eMotion combines beginner-friendly and advanced features to handle any job.

- 3D flight planning
- Preset or custom mission blocks
- Automated flight and landing
- Offline mission planning
- Multi-drone capable
- Geo-awareness and safety features



## Designed for durability

The Curv® polypropylene thermoplastic composite protects the components of the drone, ensuring its durability even after repeated belly landings.



## 3D, RGB, thermal and multispectral cameras

eBee X is compatible with a wide range of interchangeable cameras that capture reliable aerial imagery to suit every mapping job.



**S.O.D.A. 3D**  
Oblique RGB for 3D mapping.



**Duet T**  
Thermal and RGB dual camera.



**Duet M**  
Multispectral and RGB dual camera.



**Aeria X**  
24 MP RGB APS-C for precision mapping.



**S.O.D.A.**  
Compact 20 MP RGB camera.



**Corridor**  
Portrait-oriented RGB for linear mapping.

### Drone specifications

Wingspan	45.7 in / 116 cm
Material	Expanded Polypropylene (EPP)
Underbody skin	Curv® Polypropylene thermoplastic composite
Max. take-off weight	3.5 lbs / 1.6 kg
Backpack dimension	75x50x29 cm / 30x20x11 in
Motor	Low-noise, brushless, electric
Detachable wing	Yes
Radio link range	1.9 mi (up to 5 mi) 3 km nominal (up to 8 km)
Frequency	2.400 - 2.4835 GHz
Data storage	SD card

### Flight performance

Cruise speed	11-30 m/s or 25-68 mph (40-110 km/h)
Max. wind resistance	Up to 12.8 m/s or 28.6 mph (46 km/h)
Landing type	Automatic linear landing (16.4 ft / 5 m accuracy in 35° angle cone)
Service temperature*	5° to 104°F (-15° to 40°C)
Humidity	Light rain resistance
Ground avoidance	Yes - LiDAR (range 394 ft / 120 m)
Ground resolution	Down to 0.6 in / 1.5 cm
Max. flight time	90 minutes
Coverage at 400 ft / 120 m	543 ac to 1,235 ac / 2,2 km² to 5 km² / 220 ha to 500 ha
Linear coverage	Up to 17.2 mi / 27.7 km out and back

\*Working above 95 °F / 35°C requires protecting the drone from the sun while on the ground.